

## ***Instructions for re-installing studioMAN***

This document provides instructions for re-installing the studioMAN application should it become necessary. This would include instances where a new computer has been purchased and the application needs to be re-installed. If, for any reason, the studioMAN software is still installed but you need to restore your databases, please visit the studioMAN support website ([www.studioman.ca/support](http://www.studioman.ca/support)) and click the “Instruction for restoring databases” link.

To re-install studioMAN:

1. Ensure you have your studioMAN data and security backups. These will be necessary to get the application working again.
2. Ensure your computer is connected to the Internet as it will be necessary to download files in order to install studioMAN.
3. Visit [www.studioman.ca/support](http://www.studioman.ca/support) and click on the links **setup.exe** and **studioMAN setup.msi** and save to your desktop.
4. If you are installing studioMAN on a single computer, or are installing studioMAN on the main machine of a network, double-click on the setup.exe file to start the process.

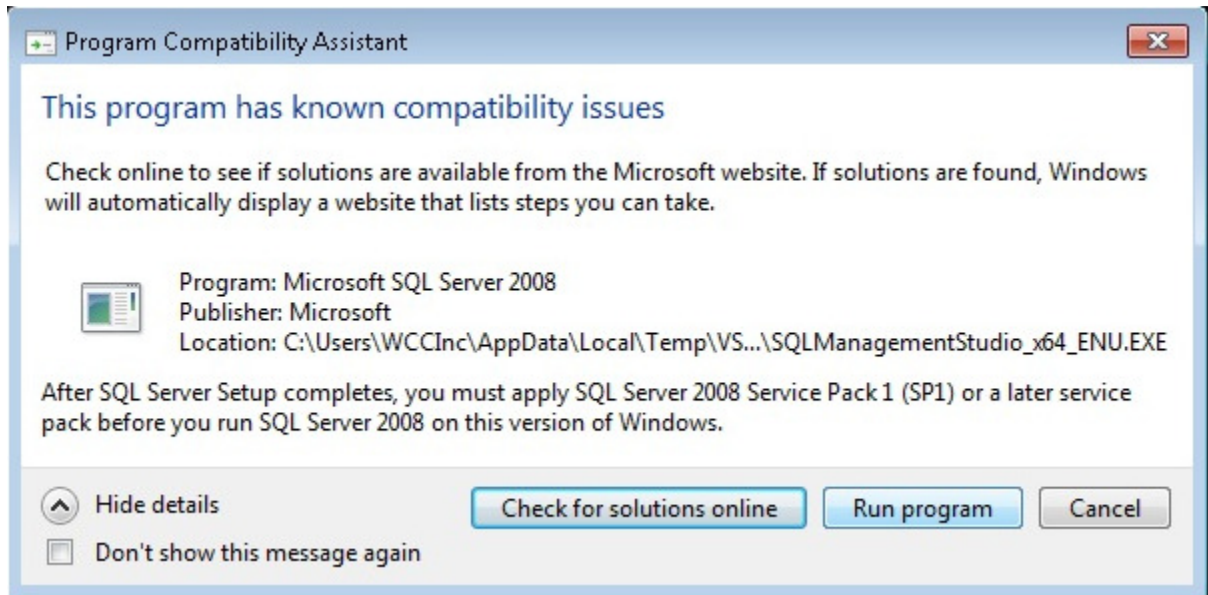
**Or**

If you are installing on another machine on a network, double-click the studioMAN setup.msi file to start the process. Then skip to step 7.

5. If installing on a single machine, or the main machine of a network, specific pre-requisite software must be installed on your machine before studioMAN can operate properly (this is software that is necessary in order for studioMAN to operate properly). The software needed will depend on what is already installed on your machine (newer machines will need less software installed). The setup process will determine the appropriate software to install and will ask you to accept the End-User License Agreement (EULA). You must accept all instances of the agreement or studioMAN cannot be installed. Please accept any instance of a EULA that is presented to you as part of the process.
6. Once you have accepted the appropriate agreements the setup program will download and install the appropriate pre-requisite software. If at any time you are asked to provide permission to allow the software to install, please do so.

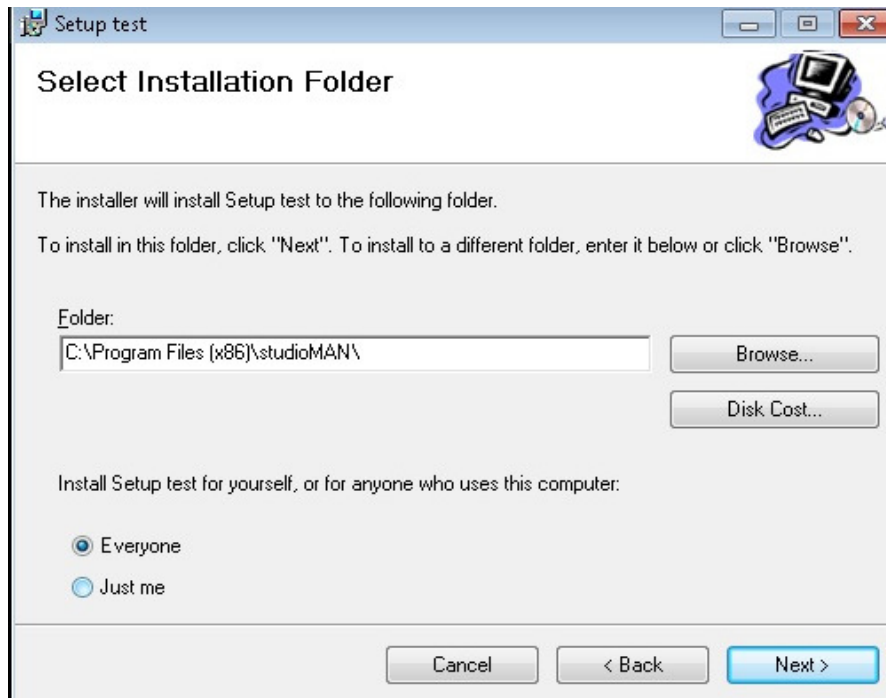
Note: depending of the software that needs to be installed, you may be asked to reboot your machine. Allow the machine to reboot and, once restarted (log back in if necessary) the setup program will resume.

Windows 7 Users: While the pre-requisite software is installing, you may encounter an error similar to the one below:



If this happens, don't worry, this is not a problem. This is only informing you that the software currently being installed required another program in order to work properly; this additional program will also be installed as part of the pre-requisite software. Simply click **Run Program** and the setup program will continue.

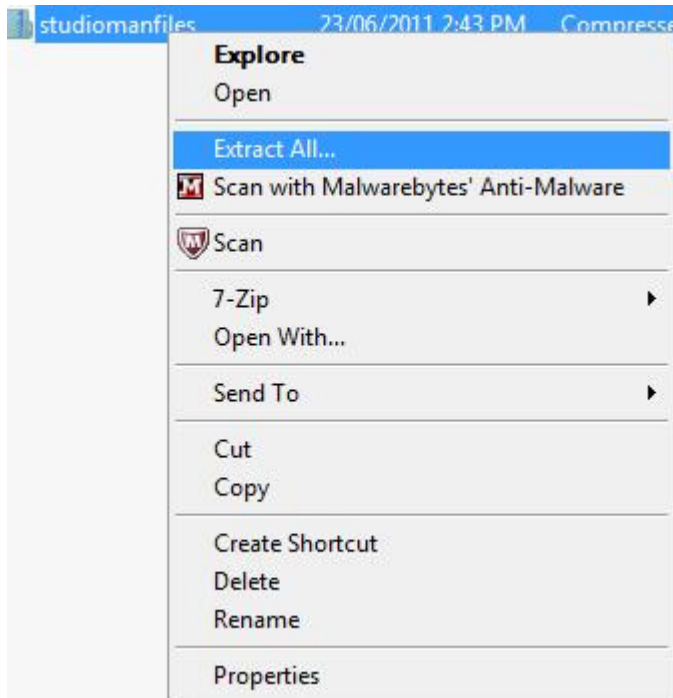
7. Once all the prerequisite software has been installed (or if you are installing to a network machine other than the main machine), the setup program will put the studioMAN files on your machine. The setup program will ask you where to install the files, and for whom to install the program. Please accept the default location (either **c:\program files\studioman** or **c:\program files (x86)\studioman**) and select install for everyone, as in the image below.



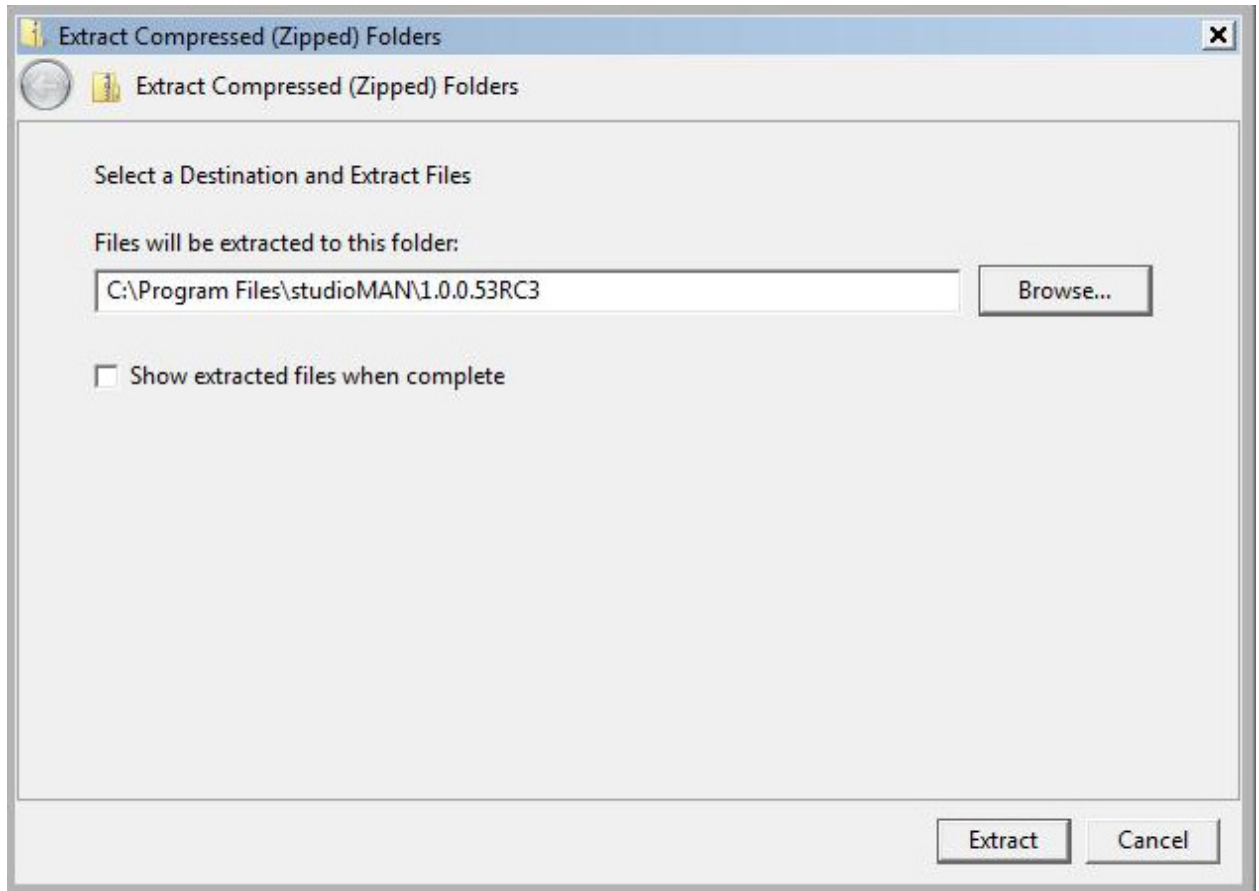
8. Click **Next**
9. Click **Next** to confirm the installation. If you are prompted to provide authorization to allow the program to install, please do so.
10. When the installation is complete, click **Close**. The appropriate files have now been installed. You will now need to extract the files and restore your databases.

Extracting the studioMAN files...

11. Open windows explorer (right-click on the Start/Windows button and select Windows Explorer or Explore).
12. Browse to the studioMAN folder which, depending on your operating system, will be in **c:\program files\studioman** or **c:\program files (x86)\studioman**
13. Locate the file named studiomanfiles.zip
14. Right-click on the file and select Extract All from the resulting menu.



15. On the resulting screen, click Browse and find either the
16. *c:\program files\studioman\1.0.0.53RC3* or *c:\program files (x86)\studioman\1.0.0.53RC3* folder



17. Click **Extract**. The studioMAN files have now been installed and you need only restore your databases (only for single computer or main machine of a network - If you are installing to a networked machine other than the main computer, studioMAN is now installed, however you must configure the network settings. Please see the section on **Configuring a Networked Computer** at the end of this document).

## Restoring the Databases

18. Locate your studioMAN data and security backups.
19. Rename the data backup to **studioman.data.bak** and the security backup to **studioMAN.security.bak**
20. Copy the renamed files to the following location:

***C:\Program Files\Microsoft SQL Server\MSSQL10.STUDIOMAN\MSSQL\Backup***

21. Open windows explorer (right-click on the Start/Windows button and select Windows Explorer or Explore).

22. Browse to the studioMAN folder which, depending on your operating system, will be in **c:\program files\studioman** or **c:\program files (x86)\studioman**
23. Locate the file named **Security setup - with Restore** and double-click it. This will open SQL Server Management studio.

If you are asked to log on, please specify:

- server name → either **localhost/studioMAN** or **name of your computer/studioMAN** (e.g. myPC/studioman) . This may already be specified.
- Authentication → select Windows Authentication

Click Enter

If SQL Management Studio fails to open, try again with the following changes:

- Authentication → select SQL Server Authentication
- Username → sa
- Password → letmein

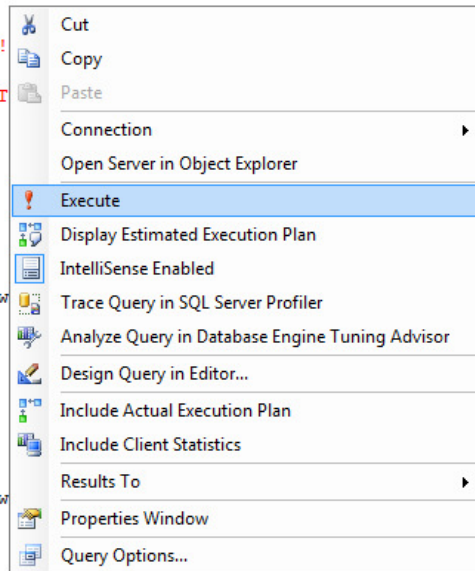
24. Once SQL Management has opened, right-click in the main window and select **Execute**

```
RESTORE DATABASE [studioman.data] FROM DISK = N'C:\Program Files\Microsoft SQL Server\MSSQL10.STUDIOMAN\I
GO

RESTORE DATABASE [studioman.Security] FROM DISK = N'C:\Program Files\Microsoft SQL Server\MSSQL10.STUDIO
GO

USE [master]
GO
CREATE LOGIN [STUDIOMAN] WITH PASSWORD=N'smanpwd!
GO
EXEC master..sp_addsrvrolemember @loginame = N'ST
GO
USE [STUDIOMAN.Data]
GO
CREATE USER [STUDIOMAN] FOR LOGIN [STUDIOMAN]
GO
USE [STUDIOMAN.Data]
GO
ALTER USER [STUDIOMAN] WITH DEFAULT_SCHEMA=[db_ow
GO
USE [STUDIOMAN.Security]
GO
CREATE USER [STUDIOMAN] FOR LOGIN [STUDIOMAN]
GO
USE [STUDIOMAN.Security]
GO
ALTER USER [STUDIOMAN] WITH DEFAULT_SCHEMA=[db_ow
GO

USE [STUDIOMAN.Data]
```



25. The process may take a few minutes but once complete you will receive a message that the process is complete.

If the message indicates that it cannot open the backup device (as pictured below), be sure you have renamed your database files as specified in step 18, and copied to the location specified in step 19 and try again.

```
Messages
Msg 3201, Level 16, State 2, Line 1
Cannot open backup device 'C:\Program Files\Microsoft SQL Server\MSSQL10.STUDIOMAN\MSSQL\Backup\studioman.data.bak'. Op
Msg 3013, Level 16, State 1, Line 1
RESTORE DATABASE is terminating abnormally.
Msg 3201, Level 16, State 2, Line 2
Cannot open backup device 'C:\Program Files\Microsoft SQL Server\MSSQL10.STUDIOMAN\MSSQL\Backup\studioman.Security.bak'
Msg 3013, Level 16, State 1, Line 2
RESTORE DATABASE is terminating abnormally.
```

If you receive a message stating that the User, Group or Role STUDIOMAN already exists (as pictured below) do not worry, this is normal and will not cause problems. You are ready to use studioMAN at this point.

```
-----
Msg 15023, Level 16, State 1, Line 1
User, group, or role 'STUDIOMAN' already exists in the current database.
-----
```

Otherwise, if you receive a message stating the process completed successfully, you are now ready to use studioMAN.

If you are installing on a single machine, or on the main machine of a network you have completed the installation. You can log in to studioMAN by double-clicking the studioMAN icon that was installed on your desktop as part of the install process.

If you have been installing on another machine in a network, please read the section below for instructions on connecting to the main machine.

## Configuring a Networked Computer

To complete the studioMAN installation on a networked machine, you need to indicate to studioMAN the computer on which the databases are located (this is not necessary for single computer installations, or for the main machine of the network). To do so...

- A. Ensure studioMAN has been installed and databases restored (if necessary) on the main machine

- B. Find the name of the main machine (on the main machine, go to Control Panel, then select System and look for the section with Computer Name). You will need this information to configure the network setting.
- C. On the networked machine, ensure you have downloaded and run the studioMAN setup.msi file from the website (see step 3 above).
- D. On the networked machine, locate the **studioMAN.UIWinForms.exe** XML configuration file. This will be in either the **c:\program files\studioman\1.0.0.53RC3** or **c:\program files (x86)\studioman\1.0.0.53RC3** folder.
- E. Open this file for editing. Open notepad on your machine (Start Menu – All Programs – Accessories – Notepad) and drag and drop the **studioMAN.UIWinForms.exe** file into the open notepad window.
- F. Find the section in the file that looks like the below:

```
<add name="studioMAN.Security" connectionString="Data Source=localhost;Initial  
Catalog=studioman.Security;Integrated Security=True" providerName="System.Data.SqlClient" />
```

```
<add name="studioMAN.Data" connectionString="Data Source=localhost;Initial  
Catalog=studioman.data;Integrated Security=True" providerName="System.Data.SqlClient" />
```

- G. Change localhost (as highlighted above)to the name of the main machine. For example, if the main machine is named myPC, the above would appear as:

```
<add name="studioMAN.Security" connectionString="Data Source=myPC;Initial  
Catalog=studioman.Security;Integrated Security=True" providerName="System.Data.SqlClient" />
```

```
<add name="studioMAN.Data" connectionString="Data Source=myPC;Initial  
Catalog=studioman.data;Integrated Security=True" providerName="System.Data.SqlClient" />
```

- H. Save the file and Close

You should now be able to log in to studioMAN from the networked computer.